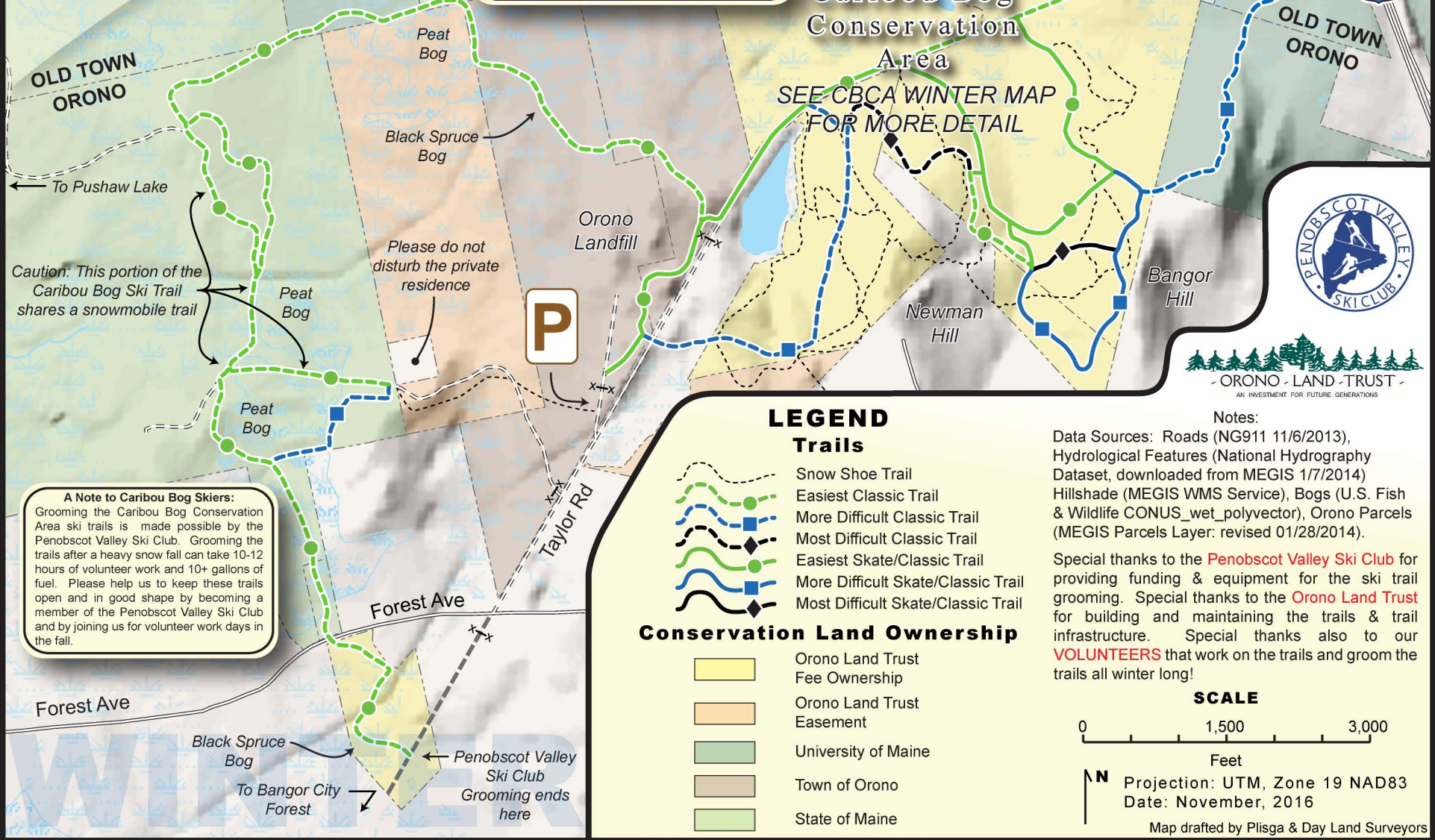


# CARIBOU BOG SKI TRAIL MAP

FOR MORE INFORMATION ON THE ORONO LAND TRUST & TO FIND THIS & OTHER MAPS, PLEASE VISIT [www.oronolandtrust.org](http://www.oronolandtrust.org) OR SCAN THIS QR CODE FOR UP TO DATE GROOMING INFORMATION OR TO POST YOUR OWN REPORT PLEASE VISIT [www.skitrailreport.com](http://www.skitrailreport.com)



**A Note to Caribou Bog Skiers:**  
Not all ski trails are groomed on a regular basis. Due to the difficult terrain, some trails require a deep base of snow before the groomer can pass through them. In a low snow season some trails may not receive enough snow cover to be groomed. The Penobscot Valley Ski Club and Orono Land Trust are working over time to improve the trails. Please help us keep these trails open by becoming a member of the land trust and ski club.



Caution: This portion of the Caribou Bog Ski Trail shares a snowmobile trail

## LEGEND

### Trails

- Snow Shoe Trail
- Easiest Classic Trail
- More Difficult Classic Trail
- Most Difficult Classic Trail
- Easiest Skate/Classic Trail
- More Difficult Skate/Classic Trail
- Most Difficult Skate/Classic Trail

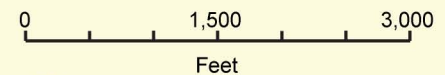
### Conservation Land Ownership

- Orono Land Trust Fee Ownership
- Orono Land Trust Easement
- University of Maine
- Town of Orono
- State of Maine

**Notes:**  
Data Sources: Roads (NG911 11/6/2013), Hydrological Features (National Hydrography Dataset, downloaded from MEGIS 1/7/2014) Hillshade (MEGIS WMS Service), Bogs (U.S. Fish & Wildlife CONUS\_wet\_polyvector), Orono Parcels (MEGIS Parcels Layer: revised 01/28/2014).

Special thanks to the **Penobscot Valley Ski Club** for providing funding & equipment for the ski trail grooming. Special thanks to the **Orono Land Trust** for building and maintaining the trails & trail infrastructure. Special thanks also to our **VOLUNTEERS** that work on the trails and groom the trails all winter long!

### SCALE



Projection: UTM, Zone 19 NAD83  
Date: November, 2016

Map drafted by Plisga & Day Land Surveyors

